

NOMENCLATURA

- 1 - Brida
- 2 - Cuerpo impulsión
- 3 - Tapa aspiración
- 4 - Turbinas
- 5 - Eje
- 6 - Difusor
- 7 - Motor
- 8 - Cierre mecánico
- 9 - Tuerca ciega
- 10 - Arandela
- 11 - Chaveta
- 12 - Tirante
- 13 - Junta tórica
- 14 - Paragotas
- 15 - Tuerca
- 16 - Recubrimiento
- 17 - Tornillo
- 18 - Tripode
- 19 - Tornillo
- 20 - Tornillo
- 21 - Protector

NOMENCLATURE

- 1 - Flange
- 2 - Discharge body
- 3 - Suction cover
- 4 - Impellers
- 5 - Shaft
- 6 - Diffuser
- 7 - Motor
- 8 - Mechanical seal
- 9 - Cap nut
- 10 - Washer
- 11 - Key
- 12 - Rod
- 13 - O-ring
- 14 - Splash protection
- 15 - Nut
- 16 - Casing
- 17 - Screw
- 18 - Tripod
- 19 - Screw
- 20 - Screw
- 21 - Protector

NOTA: Las piezas de recambio recomendadas están coloreadas. / NOTE: The recommended spare parts are coloured in.

TECHNICAL SPECIFICATIONS

Flow rate..... Q = 1 to 25 m³/h
 Total head..... H = 5 to 150 mwc
 Motors..... P = 2 to 20 hp
 (1.5 to 15 kW)
 Temperature..... T = 100°C
 (special seal 130°C)
 Material..... AISI-316L

DESCRIPTION

Sanitary multi-impeller centrifugal pump (from 2 to 7 impellers) for transferring liquids.

Special for filtering and high performance. High throughput. High quality interior and exterior finish. Material obtained through a micro-fusion process. Mirror polished exterior.

- Cast stainless steel flange, mirror polished finish.
- Cast stainless steel discharge body, suction cover and diffusers, obtained through a micro-fusion process, mirror polished exterior and interior matt finish.
- Closed impellers, also in cast stainless steel, manufactured by a micro-fusion process, matt finish.

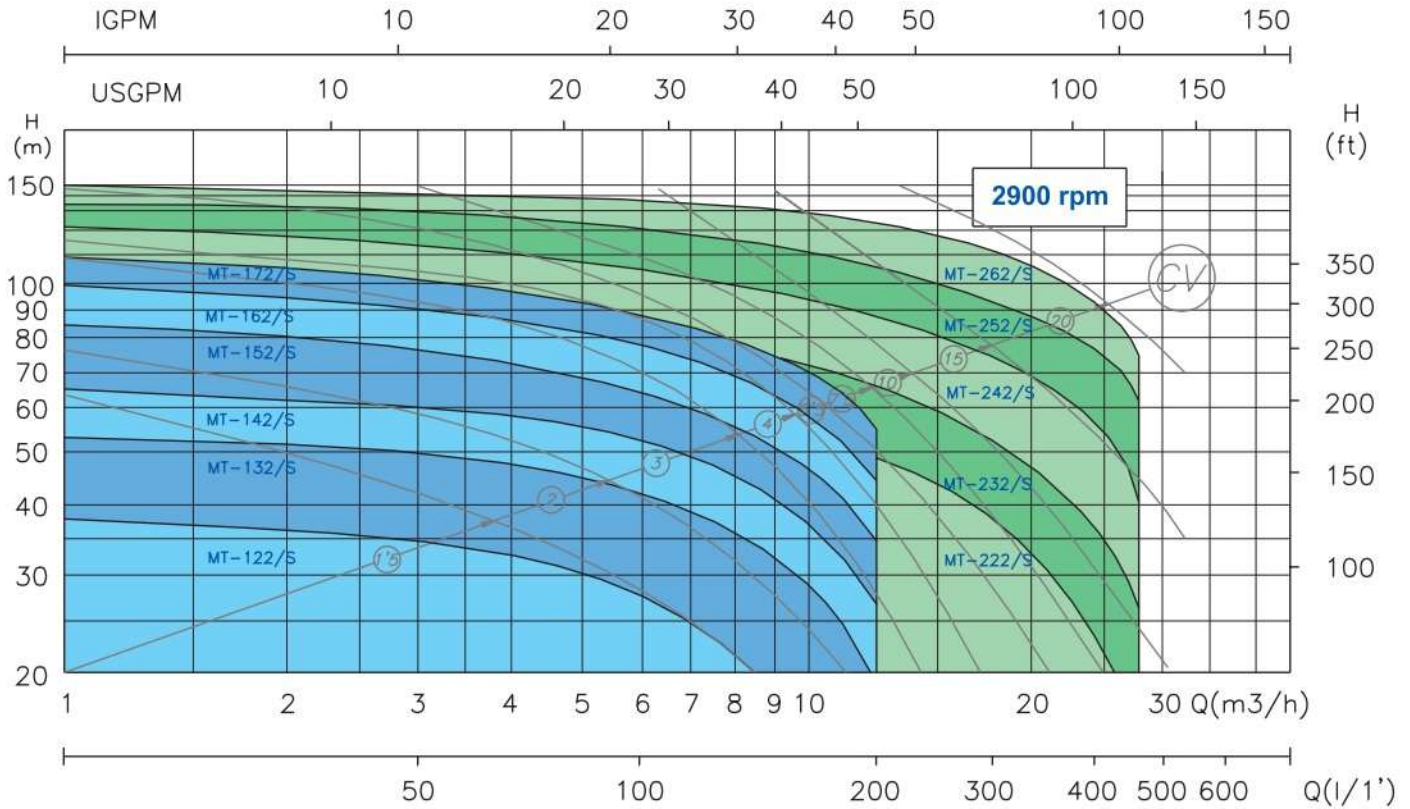
- Special motor with lengthened shaft.
- Single internal mechanical seal, Burgmann type. Other types possible.
- Adjustable tripod.
- Assembly fixing tie rods.
- Stainless steel CE flange safety protector.
- Stainless steel motor casing, Ventilated. Electrical connections inside sealed housing.

Fitted with DIN-11851 threads (possible SMS, FIL, CLAMP).

APPLICATIONS

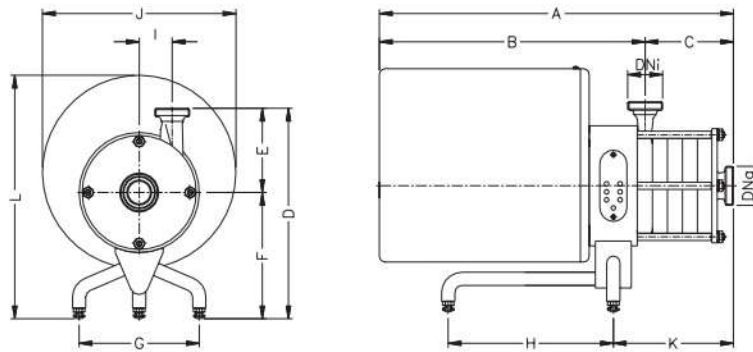
Water, wine, juices and syrups etc.

CURVAS CARACTERÍSTICAS / CHARACTERISTIC CURVES



NOTA: Estas curvas se entienden para líquido no viscoso de densidad 1 cST. / NOTE: The curves are understood to be for non-viscous liquids with a density of 1 cST.

DIMENSIONES / DIMENSIONS



TIPO / TYPE	Nº ETAPAS / Nº STAGES	MOTOR / MOTOR				DIMENSIONES / DIMENSIONS (mm)											PESO / WEIGHT (kg)																	
		TAM / SIZE	hp	kW	rpm	A	B	C	D	E	F	G	H	I	J	K		L	DNa	DNi														
MT-122/S	2	90	2-3	1.5-2.2	3000	462	390	72													268	125	371			35-38								
MT-132/S	3	90	2-3	1.5-2.2		487	390	97													268	150	371			37.5-39.5								
		100	4	3		540	443														322	150	405			44.5								
MT-142/S	4	90	2-3	1.5-2.2		512	390	122													268	175	371			42-44								
		100	4	3		565	443														322	175	405			54								
		90	3	2.2		537	390														268		371			46.5								
MT-152/S	5	100	4	3		590	443	147													350	140	210			200	275	55	322	200	405	NW-40	NW-32	56
		112	5.5	4		590	443														322		405			61								
		100	4	3		615	443														322		405			58.5								
MT-162/S	6	112	5.5	4		615	443	172													322	225	405			63.5								
		132S	7.5-10	5.5-7.5		700	528														378	225	446			77-82								
MT-172/S	7	112	5.5	4		640	443	197													322	250	405			66								
		132S	7.5-10	5.5-7.5	725	528		378	250	446	84-91																							
MT-222/S	2	100	4	3	557	462	95	441	170	271	300	400	60	322	160	457	NW-65	NW-50	55															
		112	5.5	4	557	462								322		457			59															
MT-232/S	3	100	4	3	591	462	129							322	193	457			59															
		112	5.5	4	591	462								322		457			64.5															
MT-242/S	4	112	5.5	4	624	462	162							322	227	457			68.5															
		132S	7.5-10	5.5-7.5	709	547								378		484			88-93															
MT-252/S	5	132S	7.5-10	5.5-7.5	743	547	196							378	260	484			92-102															
		160M	15-20	11-15	898	702								435	260	537			139-150															
MT-262/S	6	160M	15-20	11-15	931	702	229							435	294	537			143-154															